

BOOKMARKS

FRIENDS CORNER

SOUTHERN OREGON UNIVERSITY FRIENDS OF HANNON LIBRARY

OVER THE SUMMER, the Friends of Hannon Library sponsored the third annual Tuesday Afternoon at the Movies series. The free weekly film series, running from June 14 to August 30, featured twelve films organized into themed segments, including classic and foreign films. Each viewing was followed by a discussion, led by Sachi Fujikawa or Jerry Sonnenschein, which for many attendees was the highlight of the event. Many thanks to Sachi, Jerry, and others for their great work.

Ruby Whalley will serve again as President of the Friends of Hannon Library during 2011-2012. We are pleased to welcome new board member Laura Baden. Many thanks to outgoing board members Susan Nelson and Suzanne M. Warner for their hard work and contributions. The roster of the Board of the Friends of Hannon Library for 2011-2012 includes:

Laura Baden	Sachi Fujikawa	Gary Streit	Patty Wixon
Gerald Cavanaugh	Beth Mogford	Dorothy Swain	Jan Wright
Joyce Epstein	Jerry Sonnenschein	Ruby Whalley	

One of the board's ongoing goals is to bring new groups and community members into the Friends membership. As always, the Friends will sponsor interesting community programming and help Hannon Library purchase library materials, which is even more important than ever given the current state of the economy.

All Friends members are invited to use Hannon Library's resources and to attend 2011-2012 library events, which will soon be announced at <http://hanlib.sou.edu>. The first program will be Thursday, October 20 when Barbara Longworth presents a lecture and demonstration of Ikebana, the Japanese art of flower arrangement. Board members are busily arranging additional events to be held throughout the year, including the annual William Stafford poetry event in January.

Plans are also underway for the Friends to host a book fair in June 2012. This major event will take place throughout Hannon Library, featuring dozens of Southern Oregon authors and poets. More info to come!

Upcoming event: Thursday, October 20th at 4 p.m.
The Art of Ikebana by Barbara Longhurst
 Meese Meeting Room (LIB 305).

The SOU Friends of Hannon Library is a membership organization that was established in 1975. The Friends are committed to improving the Hannon Library collections and sponsoring the Library Lecture Series on a variety of interesting and timely topics. Member benefits include library checkout privileges, participation in a series of evening talks, the opportunity to associate with fellow bibliophiles, and the satisfaction of supporting Hannon Library. Call 541-552-6835 for information about upcoming events or to become a Friends member.

BookMarks, formerly titled Connections, is published by the Southern Oregon University Lenn & Dixie Hannon Library, 1250 Siskiyou Boulevard, Ashland, OR 97520. Editor: Mary Jane Cedar Face, Collection Development/Social Sciences Librarian. Graphic Design: Brent Cummings. Contributors to this issue of Bookmarks include Paul Adalian, Emily Miller-Franisco, and Mary Jane Cedar Face. BookMarks is available from the University Library's home page: <http://hanlib.sou.edu/newsletter>

*Southern Oregon University Library
 1250 Siskiyou Boulevard, Ashland, Oregon
 97520*

Email: library@sou.edu

<http://hanlib.sou.edu>

*Paul Adalian, Library Dean
 541-552-6833*

*Library Administration
 541-552-6816*

*Center for Teaching, Learning, and Assessment
 541-552-6447*

*Circulation Services
 541-552-6860*

*Government Publications
 541-552-6851*

*Reference Services
 541-552-6442*

Affirmative Action Statement: Southern Oregon University is committed to providing equal opportunity in its recruitment, admissions, educational programs, activities, and employment without discrimination on the basis of age, disability, national origin, race, color, marital status, religion, sex, or sexual orientation. Affirmative Action Officers: Dean of Students (Students): 541-552-6223; Associate Provost (Faculty): 541-552-6114; and Associate Vice President for Human Resources (Administrators and Classified Staff): 541-552-6511. Southern Oregon University, 1250 Siskiyou Blvd., Ashland, OR 97520. Campus information: 541-552-7672. Printed on recycled paper.

THE FIRST WORD

by Paul Adalian

THE FRIENDS of Hannon Library are currently planning the first Ashland Book and Author's Festival to be held June 23, 2012 in Hannon Library. One of the goals of the event is to engage the community with local authors, scholars, poets, playwrights, and storytellers. A second goal is to encourage membership in the Friends so community members can take advantage of the tremendous resources in the Hannon Library.

There are many authors residing in Southern Oregon who have written on a wide range of topics. All local authors will be invited to attend, especially those who have written nonfiction pieces about Southern Oregon or written novels or short stories set in this region.

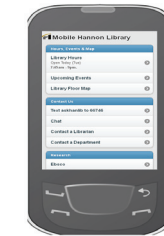
The Festival will have a variety of venues where the community can interact with local authors and SOU faculty. In addition to having authors at tables engaged in lively discussion with the community, there will be over fifty author presentations. Individual authors will be giving presentations about their works and/or do dramatic readings. Additionally, panel discussions will consist of three to four authors discussing certain genres or themes.

SOU faculty will also be invited to review their books and research. A number of faculty have published books; a majority of faculty publish their research in scholarly journals or make presentations at professional conferences. Many disciplines will be represented ranging from the humanities and social sciences to the sciences.

In the area of performances, there'll be a series of storytelling on the folklore and history of Southern Oregon. Local playwrights will be discussing and performing their work.

There'll be plenty of free parking near the Hannon Library. Food and beverages will be available at the Library's coffee shop. Mark your calendar for June 23rd from 9 a.m. to 6 p.m. A program and website will be developed as the date gets closer. Watch for the publicity.

It should be an exciting and stimulating event brought to you by the Friends of Hannon Library. Consider becoming a member!



HANNON WEBSITE GOES MOBILE

WEB ENABLED CELL PHONES are becoming more and more ubiquitous, especially among students. In response to this, we're unveiling our new mobile-friendly version of the Hannon Library website. If you'd like to see it, go to <http://hanlib.sou.edu/m>. The goal of this site is to distill our main site content into the most useful portions for someone accessing the library from their phone. It focuses on the types

of questions people are likely to have while on the move: What are the library hours? What's happening today in the library? Can I text a quick question to a reference librarian? Who is the librarian for my subject area so that I can send them a more specific question? Do you have a particular book? There will also be links to the databases that have developed mobile-friendly interfaces, including Ebsco and *Encyclopedia Britannica*.

This website is a work in progress. Do you have a smartphone? If so, please try it out and let us know what you think. There's a "feedback" link on the bottom of most pages.

E-BOOKS ON DEMAND!

WITH THE FINANCIAL CONSTRAINTS that all academic libraries face, it's increasingly challenging to select and purchase books that will meet the needs of students and faculty. One approach that has been promoted as cost-effective is to purchase books when users need them, not in anticipation of need.

With the other member libraries in the Orbis Cascade Alliance, Hannon Library is participating in a new venture, the Demand Driven Acquisitions Pilot. All member libraries contributed funds for the pilot. Working with EBL, a major library e-book provider, the Alliance pilot allows for users at any of the 36 libraries to access newly published academic books online. Every month catalog records for newly published academic books are loaded into the Hannon Library catalog and the Orbis Cascade Alliance Summit catalog, which makes it easy for users to find and access these new books. As books are utilized, the pilot funding pays for access and purchase. At the end of the pilot period, when the prepaid funds are depleted, the Alliance will evaluate the success of the project and determine what will come next.

SOU INSTITUTIONAL REPOSITORY GROWING!

HANNON LIBRARY'S ARCHIVE of student and faculty scholarship is growing with the addition of recently completed capstones, projects, research papers, and theses. Student scholarship from 2010-2011 has been added to the institutional repository, scholarship@SOU. The new SOU Institutional Repository archives and makes accessible reports, theses, papers, presentations, University publications, and other scholarly and creative artifacts of faculty, students, and departments.

Each of the three areas of [Scholarship@SOU](mailto:scholarship@SOU) - Faculty Scholarship, Student Scholarship, and eUniversity Archives - can be browsed by academic program or searched across all collections. To browse or find information about the Institutional Repository, go to: <http://hanlib.sou.edu/ir/>.

BOOKMARKS

E-RESOURCES NEWS

HANNON LIBRARY IS PLEASED to announce several new e-resources! Funding was made possible by the Distance Education program at SOU.

Sage Deep Backfile Upgrade. The *Sage Deep Backfile package*, purchased in 2008, provides access to Sage research journals that cover the social sciences, sciences, humanities, business and technology. This recent upgrade provides access to 63 new journals, increasing content by 23%. Full-text articles begin with volume 1, issue 1 of more than 410 journals.

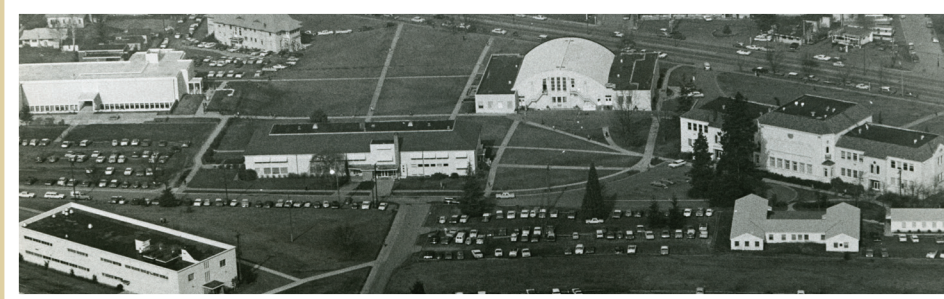
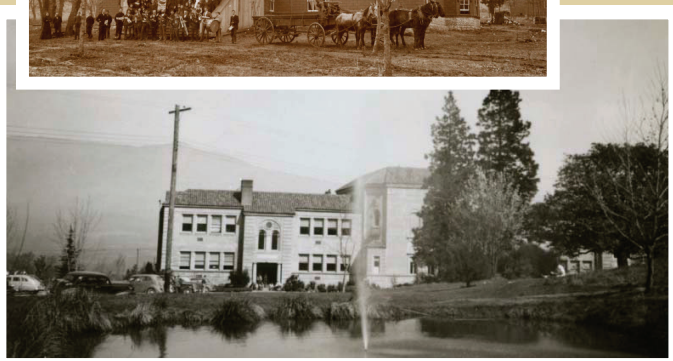
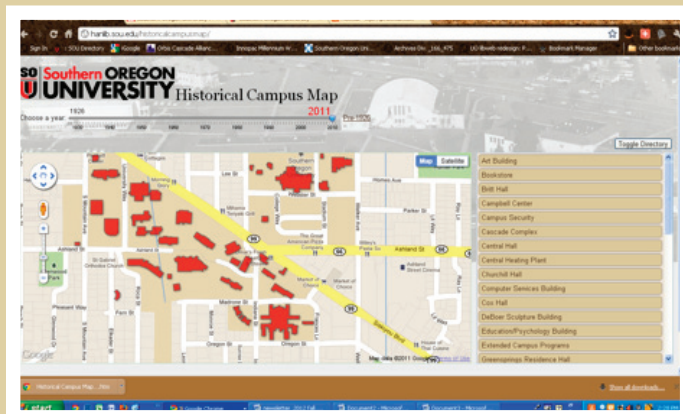
Filmakers Library Online provides streaming video of nearly 1,000 award-winning documentaries. The films cover all topics from race and gender studies, to human rights, globalization, criminal justice, the environment, bioethics, health, political science, ethnography, psychology, arts, literature, and more. Access is easy; students and faculty can watch films from campus and remote locations.

JSTOR Arts and Sciences III. *Arts and Sciences III* includes essential journals in languages, literature, music, film studies, folklore, performing arts, religion, and art and architecture, and interdisciplinary titles in folklore, feminist and women's studies. Articles begin with volume 1, issue 1. Together with our *JSTOR Arts and Sciences I and II* collections, we now have access to back runs of 394 core journals in many disciplines.

Oxford English Dictionary. The 150-year-old *Oxford English Dictionary* (OED) is widely regarded as the authority on the English language. The OED provides meanings, histories, and pronunciations for 600,000 words, past and present, across the English-speaking world. This online equivalent to our 20-volume print set is updated regularly with timely revisions and new words.

Art Index Retrospective: 1929-1984 complements our existing access to the *Art Full Text* database, enabling users to access earlier art literature with ease. In addition to leading English-language art journals, *Art Index Retrospective* covers international publications as well as yearbooks and museum bulletins.

E-resources can be accessed from the library's website: <http://hanlib.sou.edu>. For information, call 541-552-6442.



INTERACTIVE HISTORICAL CAMPUS MAP

CURIOUS HOW the Southern Oregon University campus has changed over time? Check out our new website that features a campus map with a year slider at <http://hanlib.sou.edu/historicalcampusmap/>. You can change the year and see what buildings existed at that point in time. You might try clicking on a building to see a picture of it. If you're curious to learn about the school before it came to be at this campus location, you can click on the Pre-1926 link.

The new interactive map shows the addition (and sometimes subtraction) of buildings over time. What was the Ashland Academy and where was it? Where did the library used to be? And where was the duck pond? See what other tidbits you can learn about the history of this campus by delving into this interactive map.

Development of this site was a collaborative effort between one of our librarians, Emily Miller-Francisco, and her husband Grant Miller-Francisco, a GIS Analyst. Grant provided the map-making expertise and Emily contributed her web skills and historical research. Making the site work the way it does involved some sophisticated web programming including utilization of Google Fusion Tables, Google Maps API, jQuery, MySQL, and PHP. Images are from the historical photograph collection in the University Archives.

Check out the historical background of the SOU campus at <http://hanlib.sou.edu/historicalcampusmap/>. We hope you enjoy the new site! Questions? Contact Emily Miller-Francisco at millere@sou.edu.

Images from top to bottom:

hanlib.sou.edu/historicalcampusmap

Southern Oregon State Normal School, 1899

Duck pond, ca., 1948

Churchill Hall, ca., 1950

Aerial view of campus, ca. 1966

LIBRARY ACQUIRES EUGENE BENNETT COLLECTION

HANNON LIBRARY was bequeathed the book collection of Eugene Bennett, prominent Jacksonville artist who died on November 2, 2010. A Central Point native, Bennett graduated from Medford High School and attended the University of Oregon before serving in the Navy. He received his Bachelors and Masters degrees at The Art Institute of Chicago, where he later taught. After a year in Europe, Bennett moved back to the Rogue Valley in 1958, where he taught art and, with other area artists, founded the Rogue Gallery & Art Center in 1960. Bennett continued to exhibit in Chicago, New York and San Francisco, and was a tireless supporter of local arts groups. The collection, which contains nearly 1,400 books covering all areas of art and art history, is currently being processed.

